

# **D**ynamic Rack<sup>®</sup>



[www.dynamicrack.co.in](http://www.dynamicrack.co.in)

**Dynamic RACK** offer a wide range of communication cabinets, network & sever cabinets, and fiber optics enclosures. Manufacture at a well-equipped plant using high precision machines, these racks conform to highest international standards.

**Following categories of cabinets / racks along with standard accessories are available.**

- ❑ **Wall Mount Racks**
- ❑ **Floor Standing Racks**
- ❑ **Server Racks**
- ❑ **Custom Built Racks**
- ❑ **Fiber Optics Enclosures**

## **F E A T U R E S**

- ❑ Powder coated in different attractive shades-light/ dark grey and black.
- ❑ Fabricated out of high strength steel sheets capable of bearing heavy loads.
- ❑ Spring loaded hinges for doors.
- ❑ Cable entry provision from top and bottom
- ❑ Front doors are of tinted glass with lock provided to ensure safety. Optional perforated front door for floor standing racks.



- For small networking , telecom and CCTV applications
- Made of high quality metal sheet .8mm
- 1.2mm mounting angle with clear 'U' marking
- Front with toughened glass door & lock
- Cable entry provision at top & bottom with rubber protection at edges
- Cooling fan fitting option at top
- Sufficient perforation provided at side & front for ventilation
- Finished with 7 process pre-treated powder coating
- Attractive color design- RAL- 7035
- Wall mounting hardware provided with rack



## Wall Mount Racks Available in below variant:-

S.N.	PART CODE	SIZE	DIMENSIONS (W*D*H)
1	DR-WM-4U-400	4U	550 x 400 x 230
2	DR-WM-6U-400	6U	550 x 400 x 340
3	DR-WM-6U-530	6U	550 x 530 x 340
4	DR-WM-6U-630	6U	550 x 630 x 340
5	DR-WM-9U-400	9U	550 x 400 x 475
6	DR-WM-9U-530	9U	550 x 530 x 475
7	DR-WM-9U-630	9U	550 x 630 x 475
8	DR-WM-12U-500	12U	550 x 500 x 610
9	DR-WM-12U-630	12U	550 x 630 x 610
10	DR-WM-15U-500	15U	550 x 500 x 745
11	DR-WM-15U-630	15U	550 x 630 x 745

## Optional Accessories:-

- Cooling Fan with Lead
- ACD- 6 Socket 5 Amp
- ACD- 5 Socket 5/15 Amp
- Cable Manager 1U MS/PVC
- Cantilever Tray
- Hardware Packet

# Floor Standing Racks



- For medium/large Networking, telecom, CCTV, AV and Cable TV applications
- Made of 1.2mm high quality metal sheet
- 1.6mm mounting angle with clear 'U' marking
- Front with toughened glass, Real MS door with lock
- Removable side panels
- Cable entry provision at top & bottom
- 2/4 Cooling fan fitting option at top
- Sufficient perforation provided for ventilation
- Finished with 7 process pre-treated powder coating
- Attractive color design- RAL- 7035 or black
- Perforated front & rear doors also available



## Floor Standing Rack Available in below variant:-

S.N.	PART CODE	SIZE	DIMENSIONS (W*D*H)
1	DR-FS-17U-600	17U	600 x 600 x 825
2	DR-FS-22U-600	22U	600 x 600 x 1048
3	DR-FS-24U-600	24U	600 x 600 x 1136
4	DR-FS-27U-600	27U	600 x 600 x 1269
5	DR-FS-32U-600	32U	600 x 600 x 1492
6	DR-FS-37U-600	37U	600 x 600 x 1715
7	DR-FS-42U-600	42U	600 x 600 x 1938

## Optional Accessories:-

- Fan Tray with 2/4 Fan
- ACD-6 Socket 5 Amp
- ACD-5socket 5/15 Amp
- ACD- 10 Socket 5 Amp/15 Amp
- Cable Manager 1U MS/PVC- Horizontal
- Cable Manager 1U MS/PVC- Vertical
- Stationary Shelf
- Hardware Packet



- Made of 1.2mm/1.6 mm high quality metal sheet
- Mounting angle 2mm MS with clear 'U' marking
- Front with toughened glass, Rear MS door with lock
- Optional perforated front & back doors also available
- Removable side panels
- Cable entry provision at top & bottom
- 2/4 Cooling fan fitting option at top
- Sufficient perforation provided for ventilation
- Finished with 7 process pre-treated powder coating
- Attractive color design- RAL- 7035 or black



## Server Racks Available in below variant:-

S.N.	PART CODE	SIZE	DIMENTIONS (W*D*H)
1	DR-FS-27U-1000	27U	600 x 1000 x 1269
2	DR-FS-32U-800	32U	600 x 800 x 1492
3	DR-FS-32U-1000	32U	600 x 1000 x 1492
4	DR-FS-37U-800	37U	600 x 800 x 1715
5	DR-FS-37U-1000	37U	600 x 1000 x 1715
6	DR-FS-42U-800	42U	600 x 800 x 1938
7	DR-FS-42U-1000	42U	600 x 1000 x 1938
8	DR-SR-42U-1000	42U	800 x 1000 x 1938

## Optional Accessories:-

- Fan Tray with 4 Fan
- ACD- 6 Socket 5 Amp
- ACD- 5 Socket 5/15 Amp
- ACD- 10 Socket 5 Amp/15 Amp
- Cable Manager 1U MS/PVC- Horizontal
- Cable Manager 1U MS/PVC- Vertical
- Stationary Shelf
- Sliding Keyboard Tray
- Hardware Packet

# Accessories



Cable Management



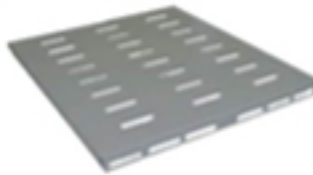
Power Management



Cooling Management



Tray



Equipments Shelf



Hardwares

Authorized Dealer:-